

# **Session II: Bringing the Sustainable Development Goals to Every Classroom**

***Session II: Roundtable Discussions  
Leveraging PRME to Contribute to the SDGs***

**Katrin Muff, Business School Lausanne  
Joanne Lawrence, Hult International Business School  
Juanita Gonzalez, Hult MBA 2017  
Wednesday, July 19, 2017  
10:30am-12noon**

A New world order is slowly beginning to emerge around us. **Matthew Gitsham, Joanne Lawrence** and **Martin Lockett** look at some of the responses we will need to develop to deal with it

# Living in a new world





# Four Areas of Application

**A. Community & stakeholder engagement**

**B. Teaching & learning**

**C. Research & consulting**

**D. Institutional transformation**

# A. Community & Stakeholder Engagement



The time is ripe for  
something  
radically different...  
For a global community

## An SDG Accelerator

# The SDG Accelerator

The go-to place for change makers  
around the world

**RITA.global**

**LINK TO RITA FILM**

<https://youtu.be/bZWS0IJWmIE>

RESPONSIBLE

# INITIATIVES TRANSFORMING ACTION

LEADERSHIP FOR A BETTER WORLD

Hosted by GRI

Hosted by PRME

[www.unPRME-Community.org](http://www.unPRME-Community.org)

**TOOLS &  
CONSULTING**

**INSIGHTS &  
IDEAS**

**EVENTS &  
WEBINARS**

**COMMUNITY  
OF PRACTICE**

**PROGRAMS &  
COURSES**

**PROJECTS  
& JOBS**

## B. Teaching and Learning at Hult

e.g., Business + Global Society Course



**Course Framework**

**Core Competencies**

**Course Capstone**





Ensure inclusive and equitable quality education and promote lifelong learning for all

# aadhar bag



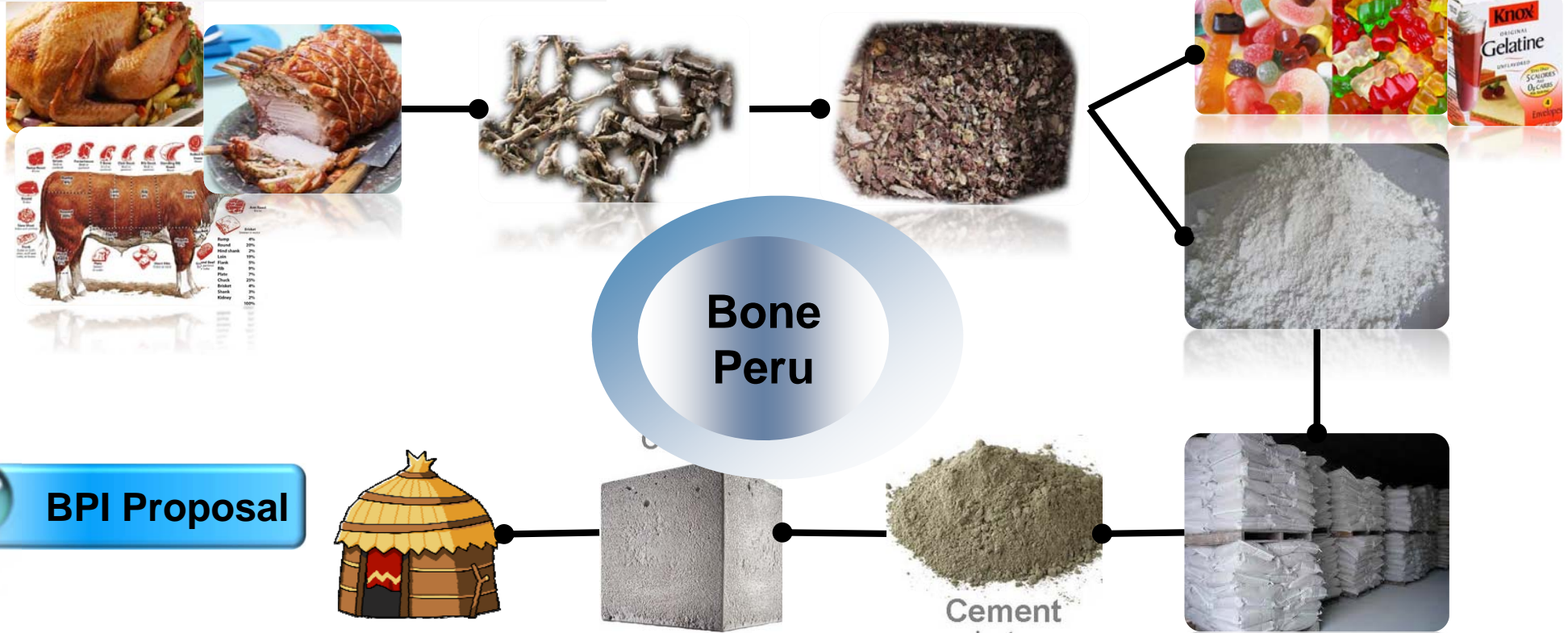


# BONE RECYCLING

Goal # 11: Responsible Production  
Goal # 12: Sustainable cities and communities

North End Team 5

SAVIOR OF CEMENT INDUSTRY  
IN PERU



2

BPI Proposal

Meat  
Consumption

Bone  
recycle

Bone  
Reprocess

Industrial  
Material  
 $\text{CaCO}_3$

Cement

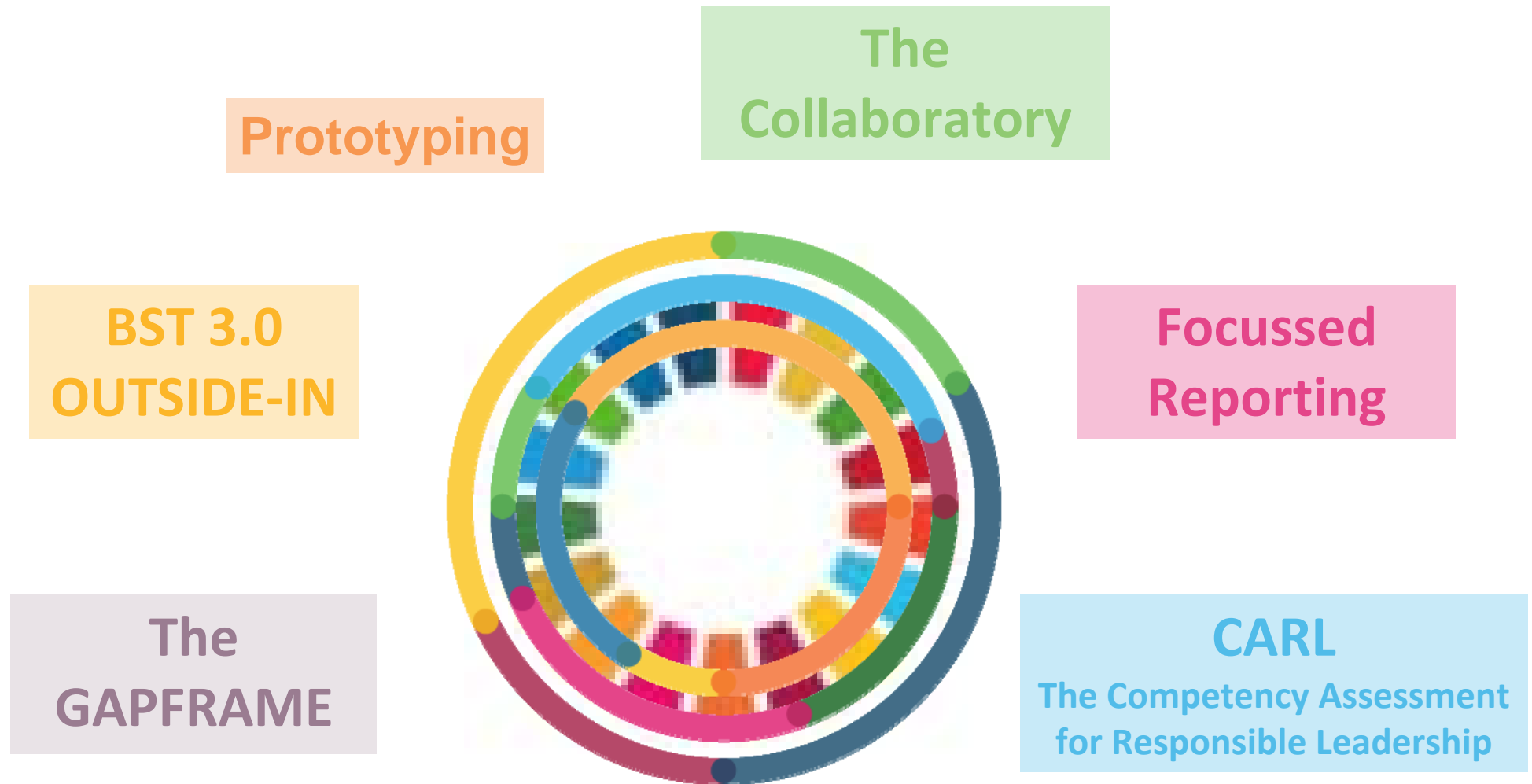
Concrete

House/  
Building

# Impact: Student Perspective

*To learn more about Hult students and the SDGs:  
see <https://youtu.be/EhL-jklJmUM>*

# C. Applied Research + Consulting



## Accelerating change & scaling impact



# The SDG Compass

(developed in 2015 by  
GRI, UNGC & WBCSD)

## The GAPFRAME



**Step 1: Understanding  
the SDGs**

**Step 2: Defining  
priorities**

**Step 3: Setting goals**

**Step 4: Integrating**

**Step 5: Reporting &  
communicating**

**A SDG Strategy Tool**

# The SDG Compass

(developed in 2015 by  
GRI, UNGC & WBCSD)

The  
GAPFRAME

BST 3.0  
OUTSIDE-IN

- Step 1: Understanding the SDGs
- Step 2: Defining priorities
- Step 3: Setting goals
- Step 4: Integrating
- Step 5: Reporting & communicating



A SDG Strategy Tool

# The SDG Compass

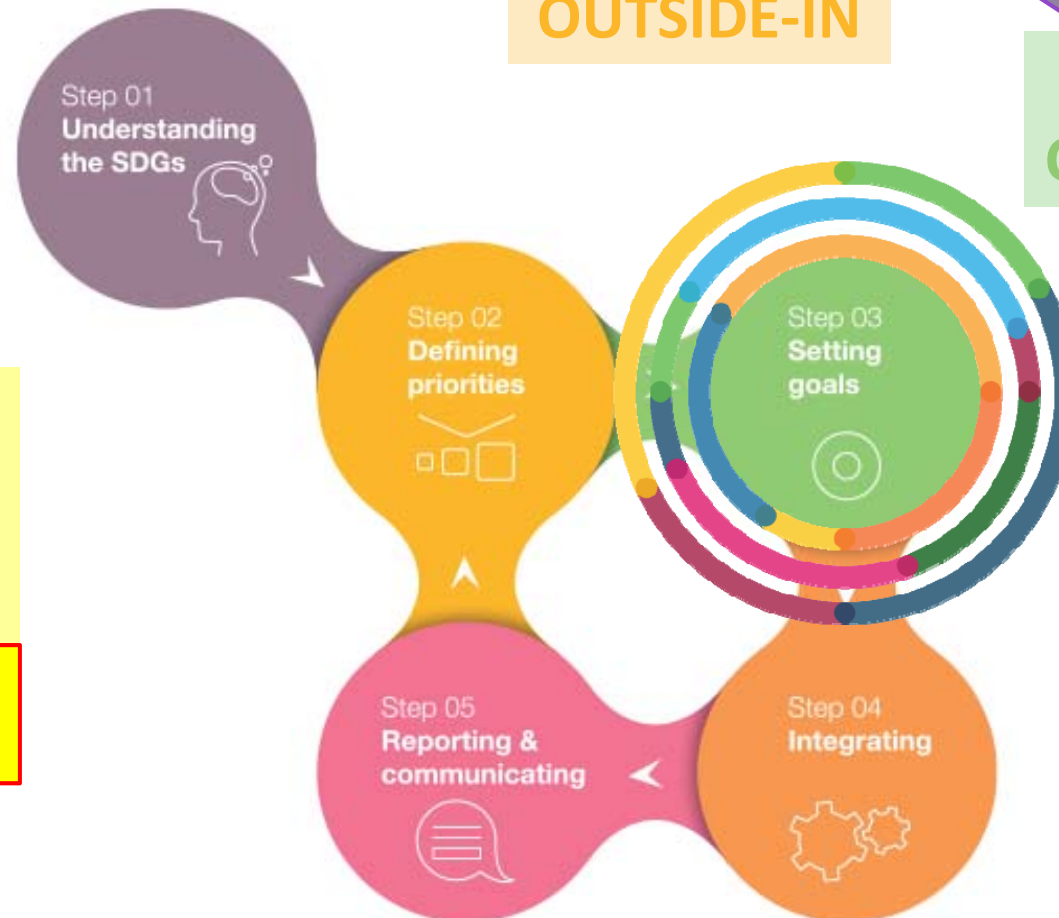
(developed in 2015 by  
GRI, UNGC & WBCSD)

The  
GAPFRAME

BST 3.0  
OUTSIDE-IN

The  
Collaboratory

- Step 1: Understanding the SDGs
- Step 2: Defining priorities
- Step 3: Setting goals**
- Step 4: Integrating
- Step 5: Reporting & communicating



A SDG Strategy Tool



# The SDG Compass

(developed in 2015 by  
GRI, UNGC & WBCSD)

- Step 1: Understanding the SDGs**
- Step 2: Defining priorities**
- Step 3: Setting goals**
- Step 4: Integrating**
- Step 5: Reporting & communicating**

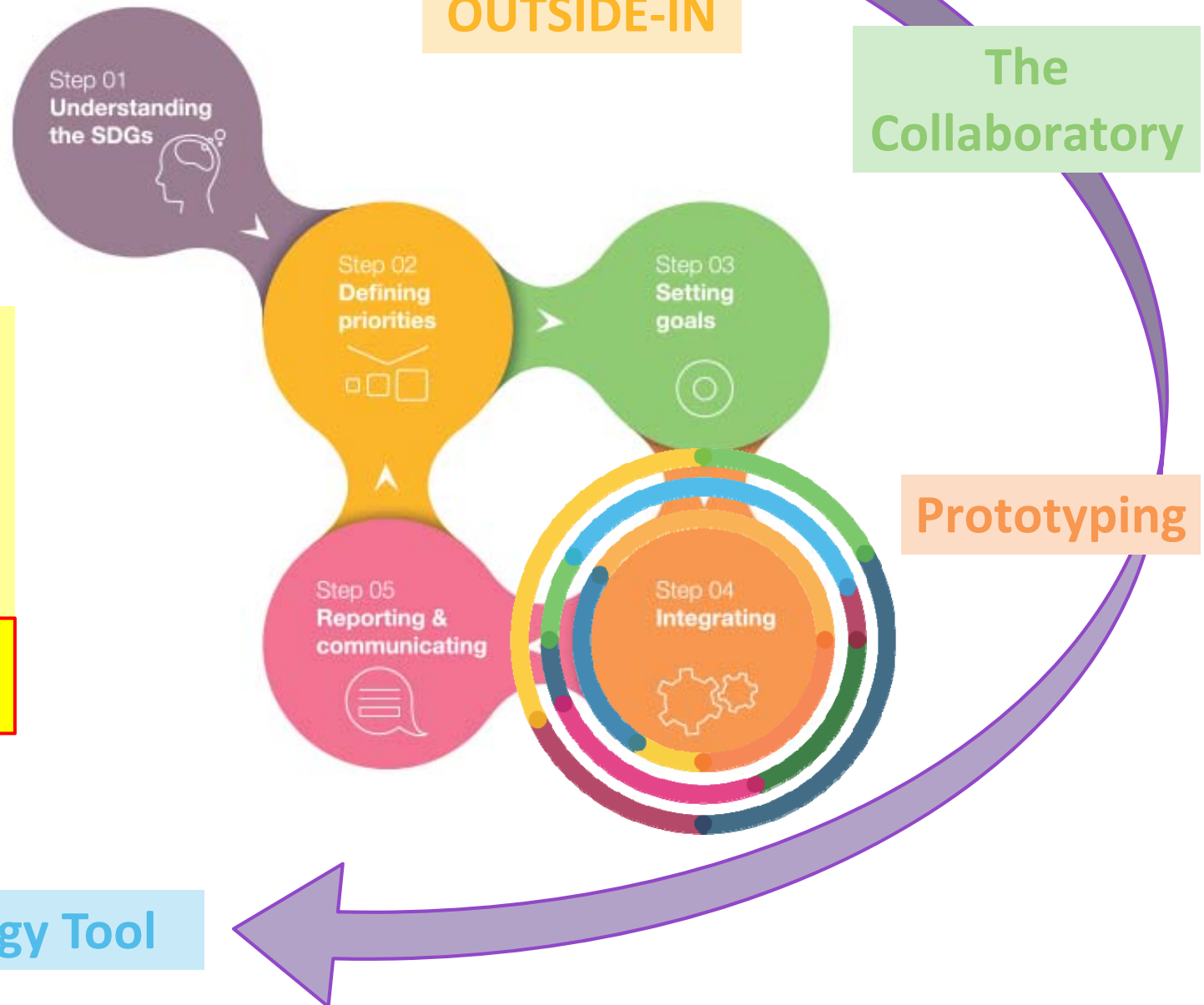
The  
GAPFRAME

BST 3.0  
OUTSIDE-IN

The  
Collaboratory

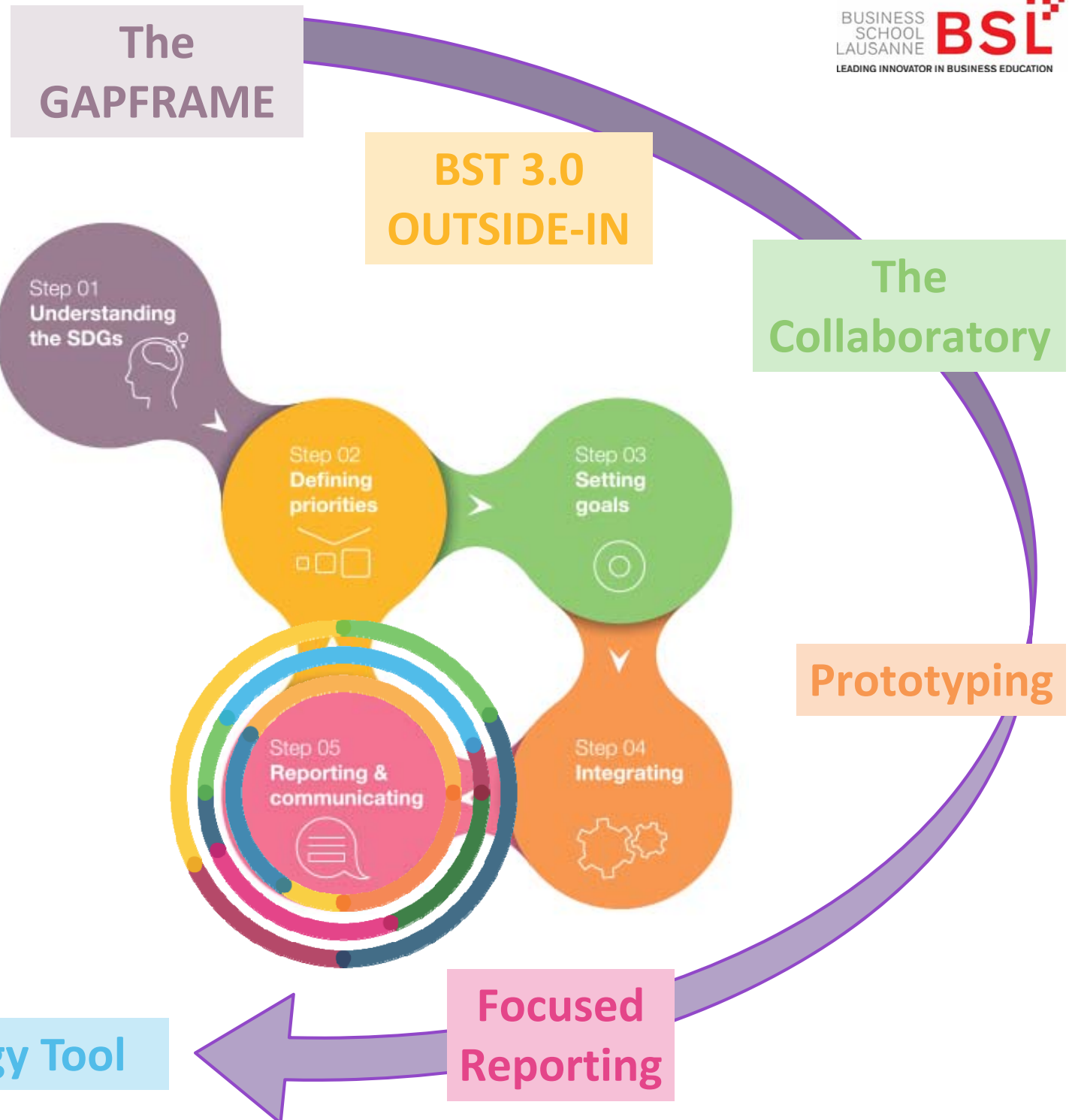
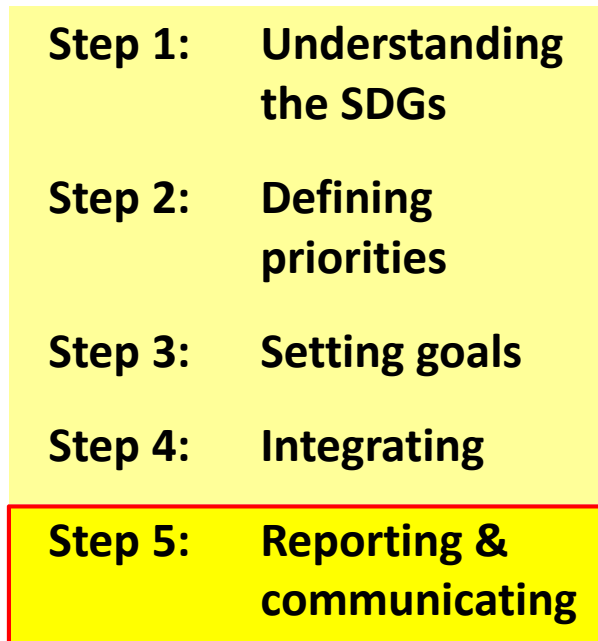
Prototyping

A SDG Strategy Tool



# The SDG Compass

(developed in 2015 by  
GRI, UNGC & WBCSD)



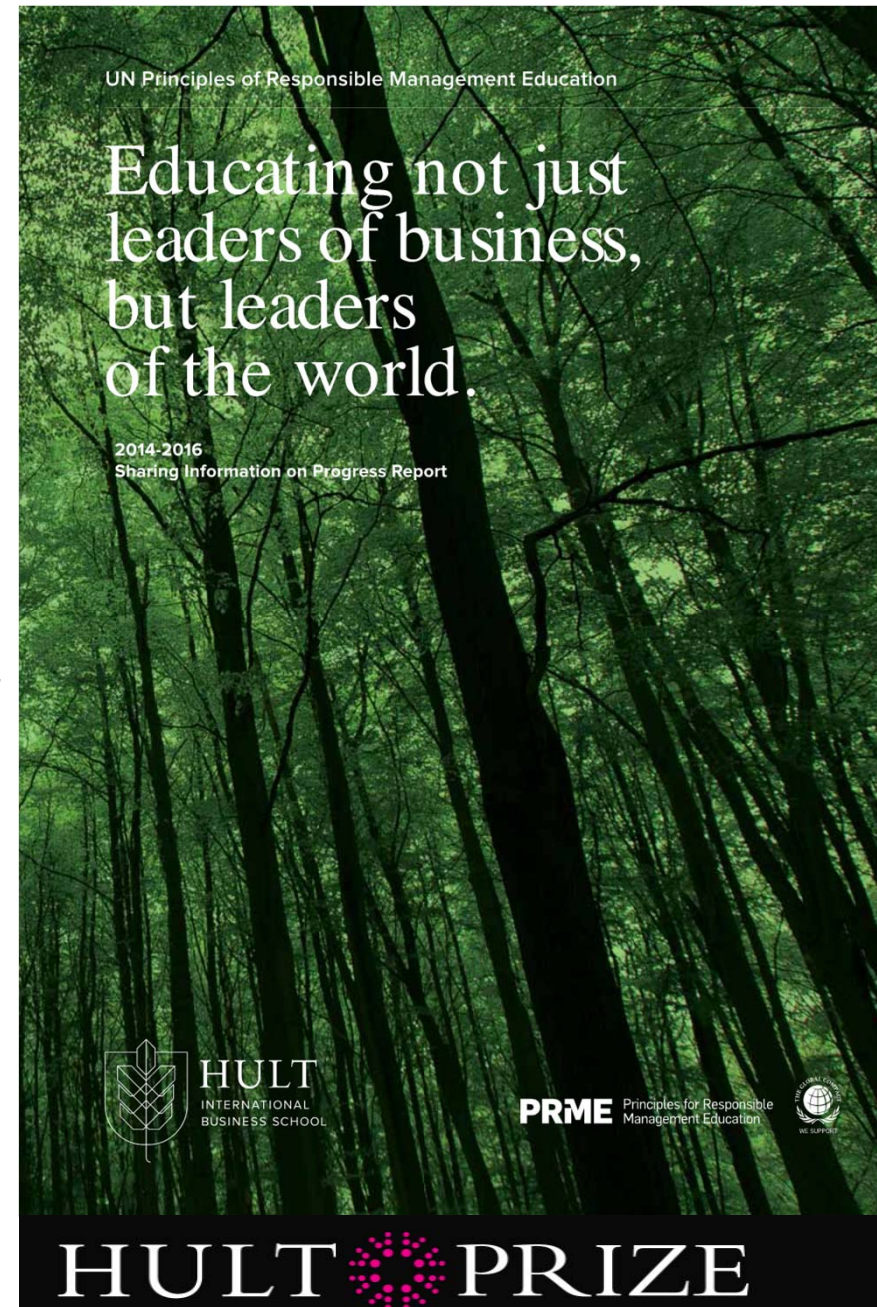
# D. Institutional Transformation + SDGS

## MISSION

*We strive to be the most relevant business school in the world. By using our global reach and by always being creative, entrepreneurial, and on the cutting edge, our aim is to have a positive impact on individuals and organizations by transforming their management practices. In so doing, we hope to be the business school choice for existing and aspiring leaders. **We will contribute to sustainable growth, helping leaders to integrate commercial success and societal well-being.***

## HOW?

**GOVERNANCE- CULTURE- MINDSET**

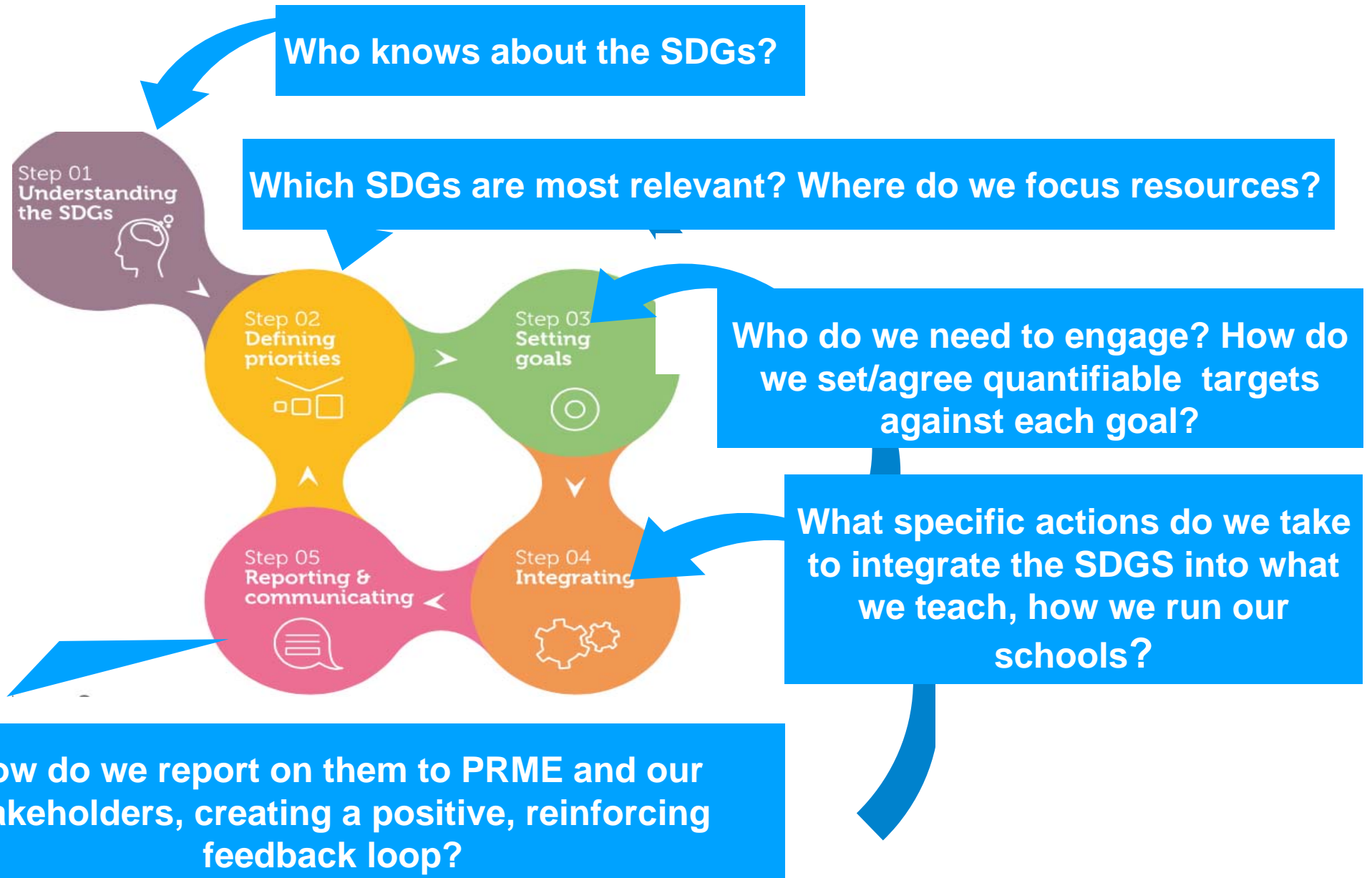




# Hult: Integrating SDGs into What We Teach, Who We Teach, Where We Teach

Hult/Ashridge PRME target	Relevant SDG
Ensure societal impact is integrated into the School's strategy	All
Increase the proportion of required courses that include Learning Objectives relating to societal impact across all undergraduate, postgraduate, and executive programs	Goal #4 Target #7
Develop a policy on overall goals regarding cohort diversity across all programs, with specific reference to gender, students from developing countries, and students from disadvantaged backgrounds.	Goal #4 Targets #4, #5 and #9
Develop a plan of activities for sharing and growing faculty learning on integrating societal impact themes throughout the curriculum through a combination of recruitment and faculty development	Goal #4 Target #7
Grow the population of faculty making intellectual contributions with societal impact	All / and Goal #4 Target #7
Continue the environmental activities already being undertaken across all campuses, and establish an ongoing environmental data collection and monitoring process	Goals #3, #5, #6, #7, #8, #12, #13, #15, #16

# D. INSTITUTIONS AND THE SDG COMPASS: A GUIDE FOR SCHOOLS TO TAKE ACTION



# Priorities at your school

## Four areas of application

**A. Community &  
stakeholder engagement**

**B. Teaching & learning**

**C. Research & consulting**

**D. Institutional  
transformation**

**Personal questions preparing  
the roundtable discussion:**

- **What is most important to  
your school?**
- **Where are the biggest  
opportunities for change?**
- **Where do you have most  
impact?**



# Your Turn – share your best ideas in your roundtable and in our community of practice

## Four areas of application

- A. Community & stakeholder engagement
- B. Teaching & learning
- C. Research & consulting
- D. Institutional transformation

Discuss and share on  
[www.unPRME-Community.org](http://www.unPRME-Community.org)

1. What should we be doing/could be doing to integrate SDG topics?
2. What new/additional competencies do the faculty and staff need to create and implement an SDG culture/mindset?
3. How do/might we assess our impact and how might we 'scale' our initiatives?

WHAT IS THE **ONE** TAKEAWAY FROM THIS DISCUSSION THAT YOU COMMIT TO IMPLEMENT AT YOUR SCHOOL?

# Thank you!

**To contact us:**

[Katrin.Muff@bsl-lausanne.ch](mailto:Katrin.Muff@bsl-lausanne.ch)

skype Katrin.Muff

Twitter: @KatrinMuff

[Joanne.lawrence@faculty.hult.edu](mailto:Joanne.lawrence@faculty.hult.edu)

skype joanne.lawrence.g

For more on the Hult Prize, see

[www.hultprize.org](http://www.hultprize.org)